



*Performance Dashboard
up to and including May 2023*



Data Collection



The data from this report is collected from the following sources:

Crime Data:

<https://data.london.gov.uk/dataset/mps-monthly-crime-dashboard-data>

ASB, CCTV and Prevent Data:

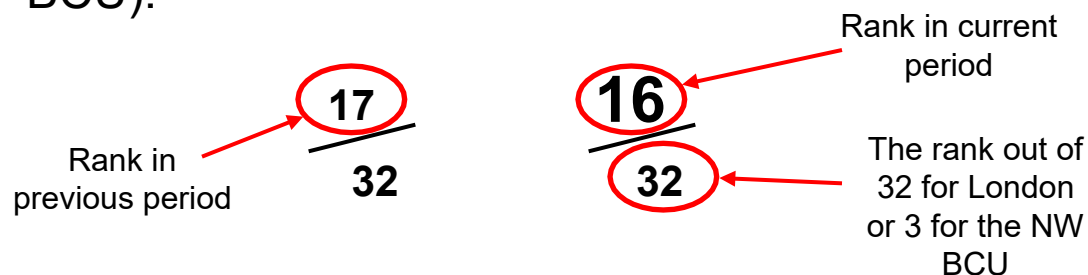
Barnet Community safety Team

Slides 4-11 are formed from the above sources and will be presented by MPS NW BCU

Slides 12-19 are formed from LBB data (ECINS/CCTV, PREVENT) and will be presented by LBB

Notes Before We Start

- The lower the ranking the better Barnet is doing when compared with other boroughs across London or in the North West Borough Command Unit (NW BCU).



- Knife crime has previously been reported on as under 25s and non-DV only, this report will note all knife crime with injury which will give a higher number than previous.
- In the London comparison 1/32 is the best, 32/32 is the worst. Change is indicated by the Red Amber Green circle.
- In the NW BCS comparison 1/3 is the best, 3/3 is the worst. Change is indicated by the Red Amber Green arrow.

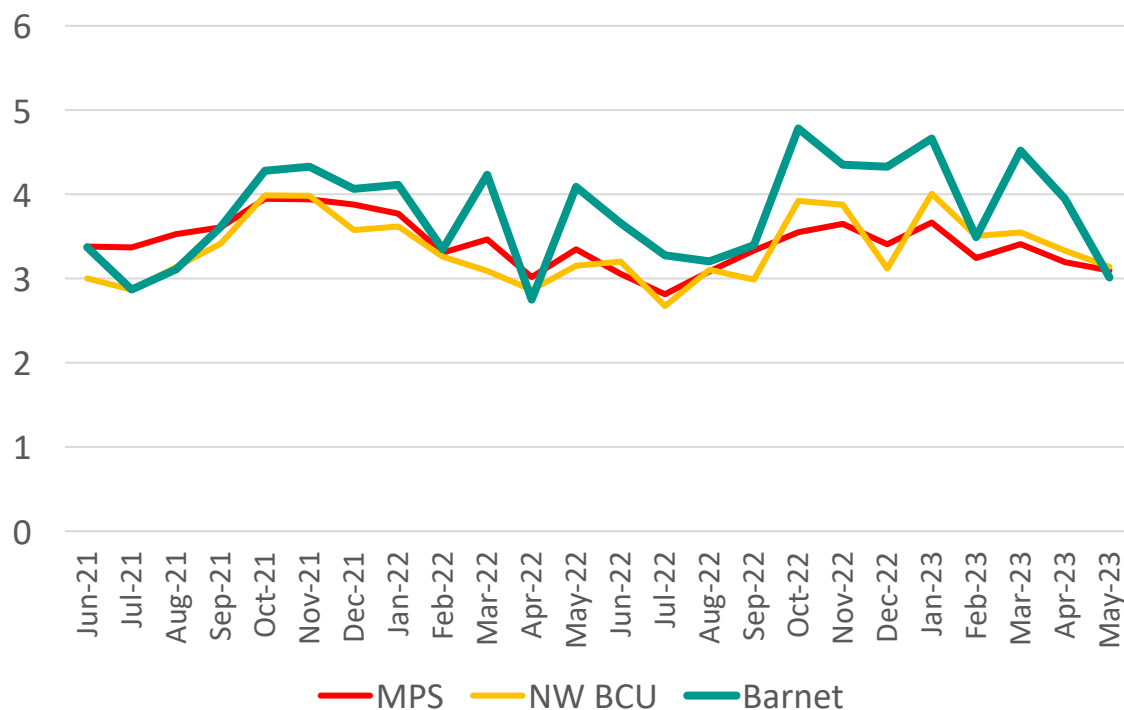
Domestic Burglary



In the 3 months of March 2023 to May 2023 there were 480 cases of Residential Burglary in Barnet

Trend

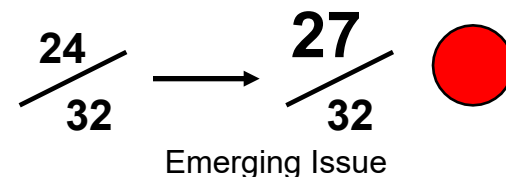
Residential Burglary per 10,000 Population



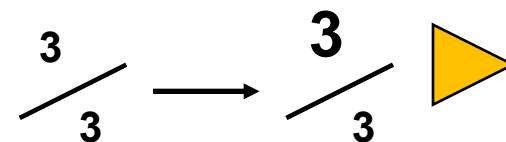
There were 1950 cases of Residential Burglary in Barnet in the 12 months up to May 2023. In the 12 months prior there were 1847. This is an increase of 5.6%

3 Month Performance

MPS Comparison (3 Month Period) change from same period last year.



NW BCU Comparison (3 Month Period) change from same period last year.



There were 480 cases of Residential Burglary in the 3 months of March 2023 to May 2023. In the same period 12 months prior there were 463. This is an increase of 3.7%

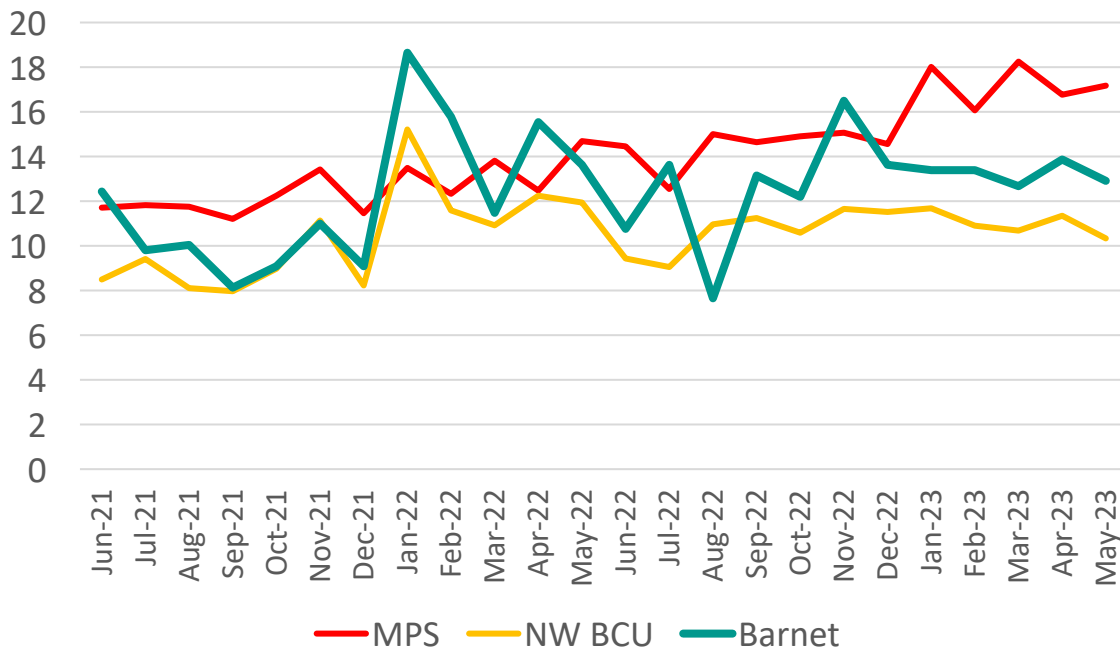
Burglary Business and Community



In the 3 months of March 2023 to May 2023 there were 165 cases of Non-Residential Burglary in Barnet

Trend

Non-Residential Burglary per 100,000 Population



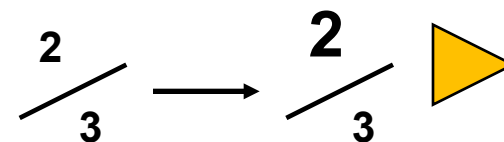
There were 643 cases of Non-Residential Burglary in Barnet in the 12 months up to May 2023. In the 12 months prior there were 605. This is an increase of 6.3%

3 Month Performance

MPS Comparison (3 Month Period) change from same period last year.



NW BCU Comparison (3 Month Period) change from same period last year.



There were 165 cases of Non-Residential Burglary in the 3 months of March 2023 to May 2023. In the same period 12 months prior there were 170. This is a decrease of 2.9%

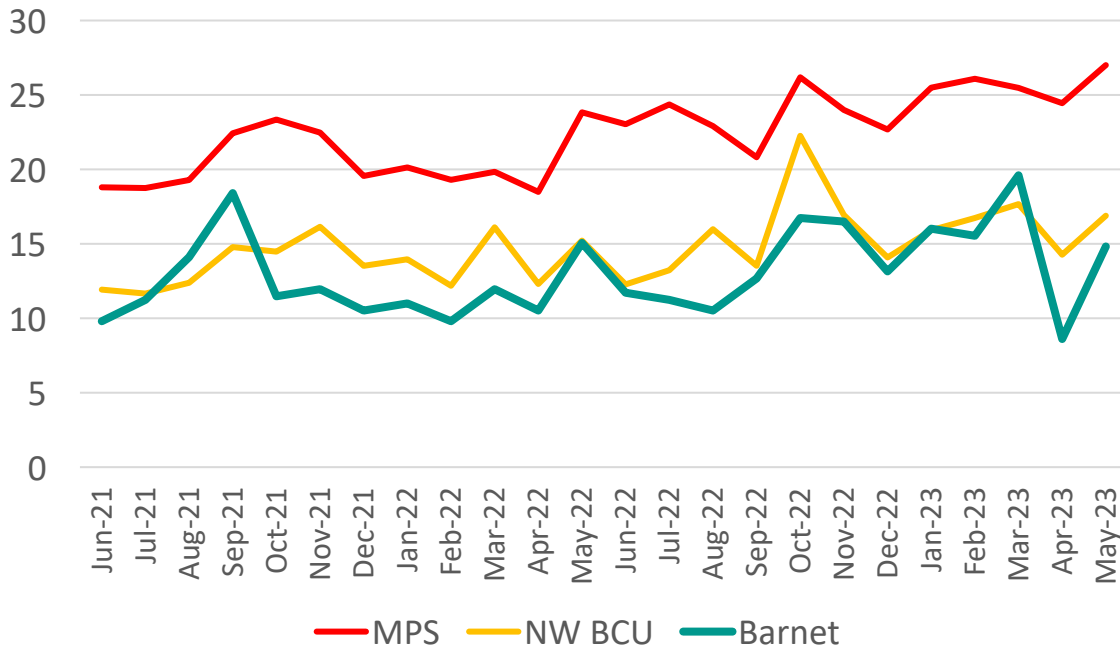
Robbery of Personal Property



In the 3 months of March 2023 to May 2023 there were 180 cases of Robbery of Personal Property in Barnet

Trend

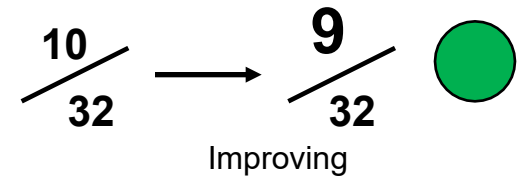
Robbery of Personal Property per 100,000 Population



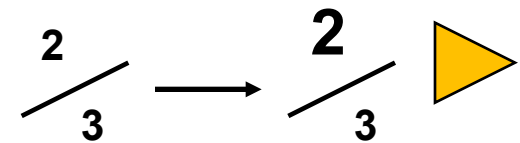
There were 699 cases of Robbery of Personal Property in Barnet in the 12 months up to May 2023. In the 12 months prior there were 610. This is an increase of 14.6%

3 Month Performance

MPS Comparison (3 Month Period) change from same period last year.



NW BCU Comparison (3 Month Period) change from same period last year.



There were 180 cases of Robbery of Personal Property in the 3 months of March 2023 to May 2023. In the same period 12 months prior there were 157. This is an increase of 14.6%

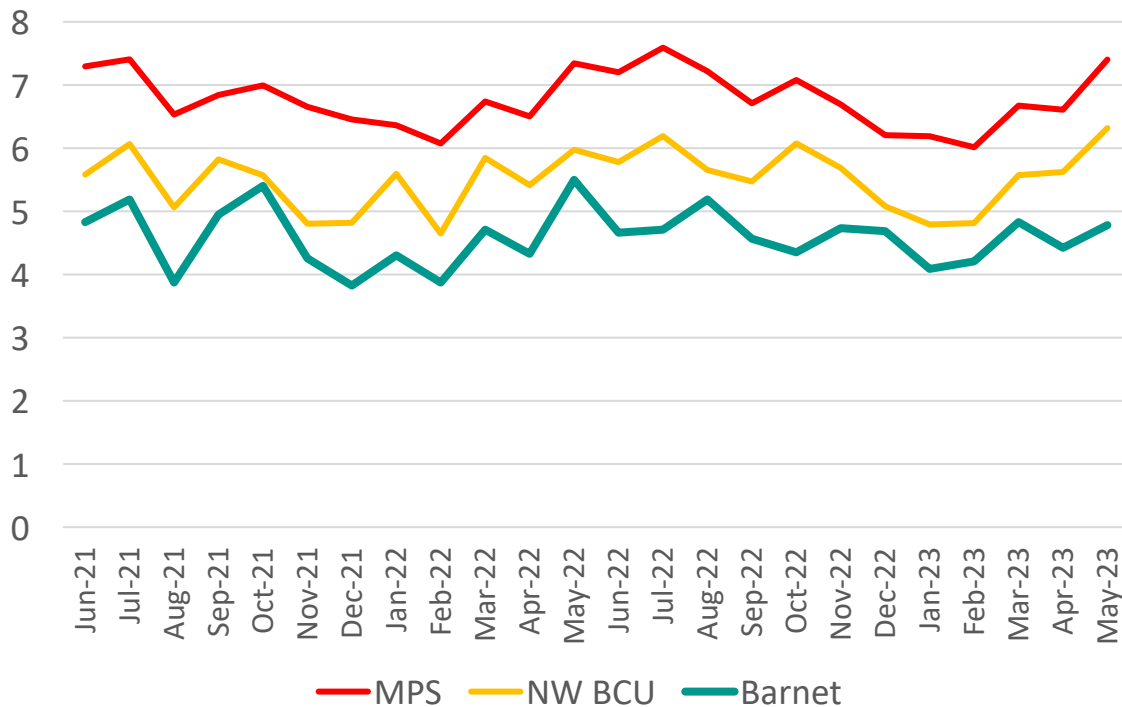
Violence with Injury



In the 3 months of March 2023 to May 2023 there were 587 cases of Violence with Injury in Barnet

Trend

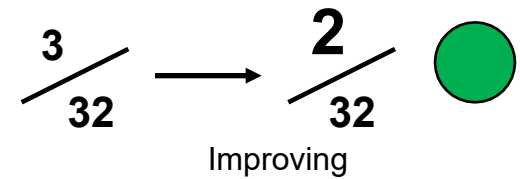
Violence with Injury per 10,000 Population



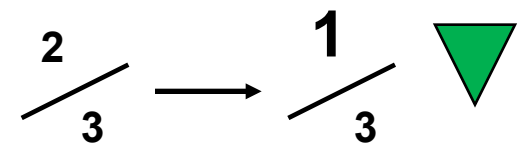
There were 2310 cases of Violence with Injury in Barnet in the 12 months up to May 2023. In the 12 months prior there were 2302. This is an increase of 0.3%

3 Month Performance

MPS Comparison (3 Month Period) change from same period last year.



NW BCU Comparison (3 Month Period) change from same period last year.



There were 587 cases of Violence with Injury in the 3 months of March 2023 to May 2023. In the same period 12 months prior there were 608. This is a decrease of 3.5%

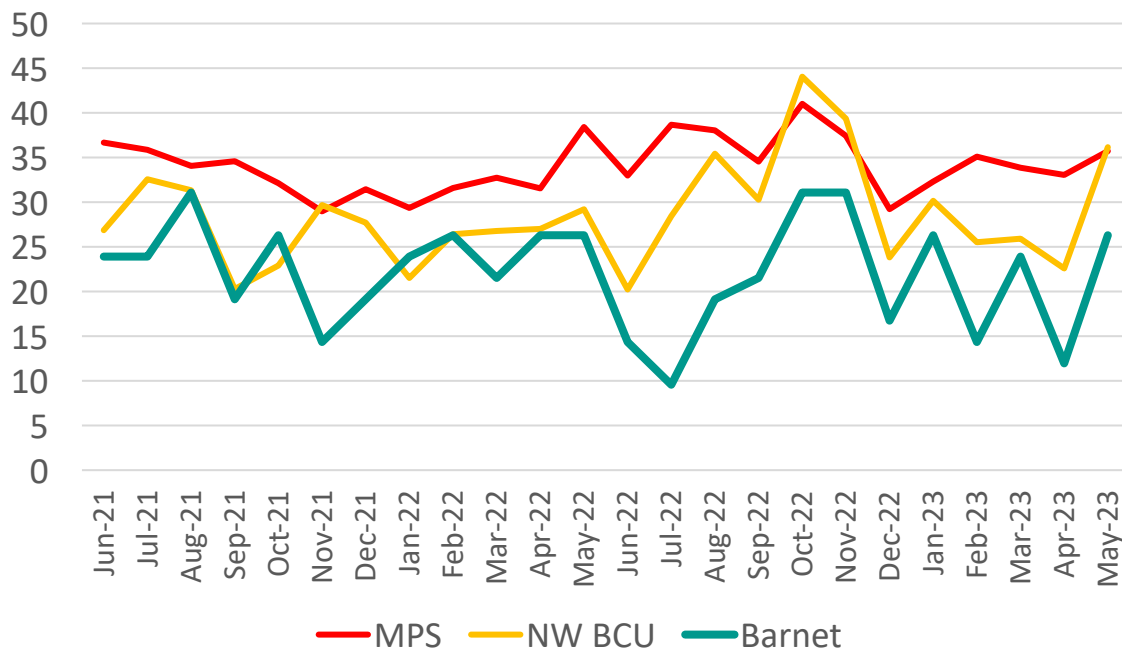
Knife Crime With Injury



In the 3 months of March 2023 to May 2023 there were 23 cases of Knife Crime With Injury in Barnet

Trend

Knife Crime With Injury per 1,000,000 Population



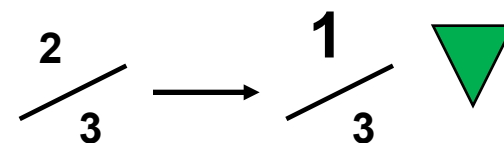
There were 91 cases of Knife Crime With Injury in Barnet in the 12 months up to May 2023. In the 12 months prior there were 93. This is a decrease of 2.2%

3 Month Performance

MPS Comparison (3 Month Period) change from same period last year.



NW BCU Comparison (3 Month Period) change from same period last year.



There were 23 cases of Knife Crime With Injury in the 3 months of March 2023 to May 2023. In the same period 12 months prior there were 24. This is a decrease of 4.2%

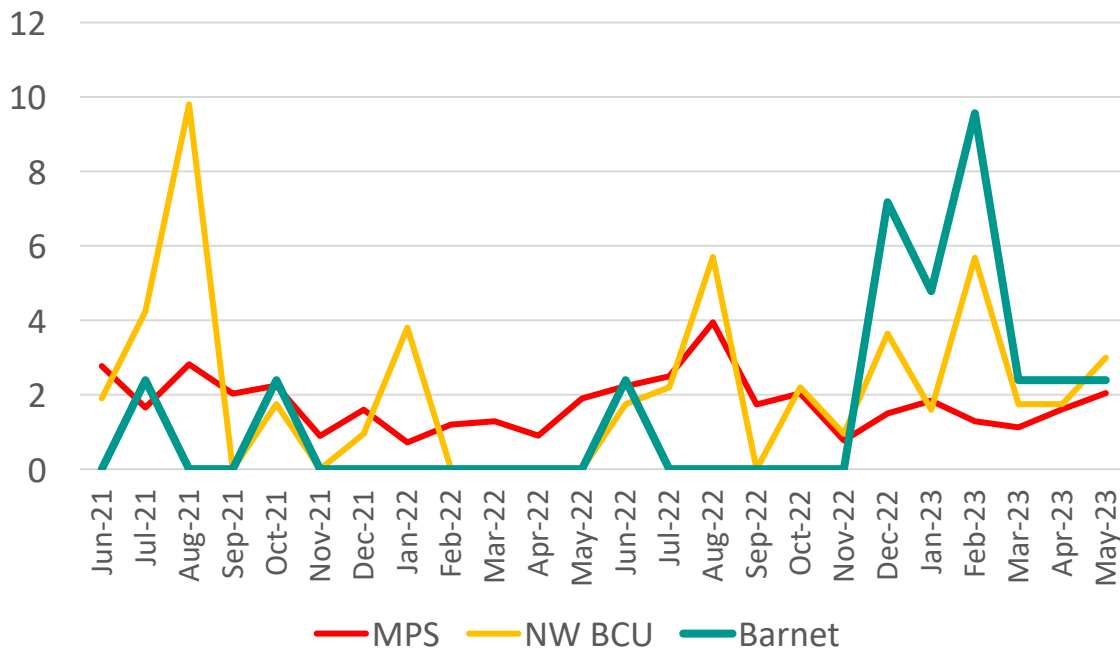
Gun Crime Lethal Barrelled Discharged



In the 3 months of March 2023 to May 2023 there were 3 cases of Gun Crime Lethal Barrelled Discharged in Barnet

Trend

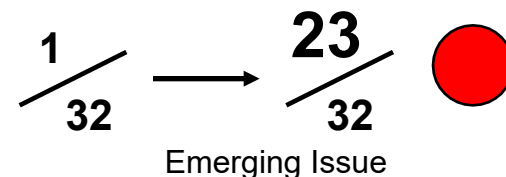
Gun Crime Lethal Barrelled Discharged per 1,000,000 Population



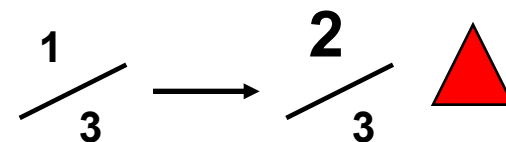
There were 13 cases of Gun Crime Lethal Barrelled Discharged in Barnet in the 12 months up to May 2023. In the 12 months prior there were 2. This is an increase of 550%

3 Month Performance

MPS Comparison (3 Month Period) change from same period last year.



NW BCU Comparison (3 Month Period) change from same period last year.

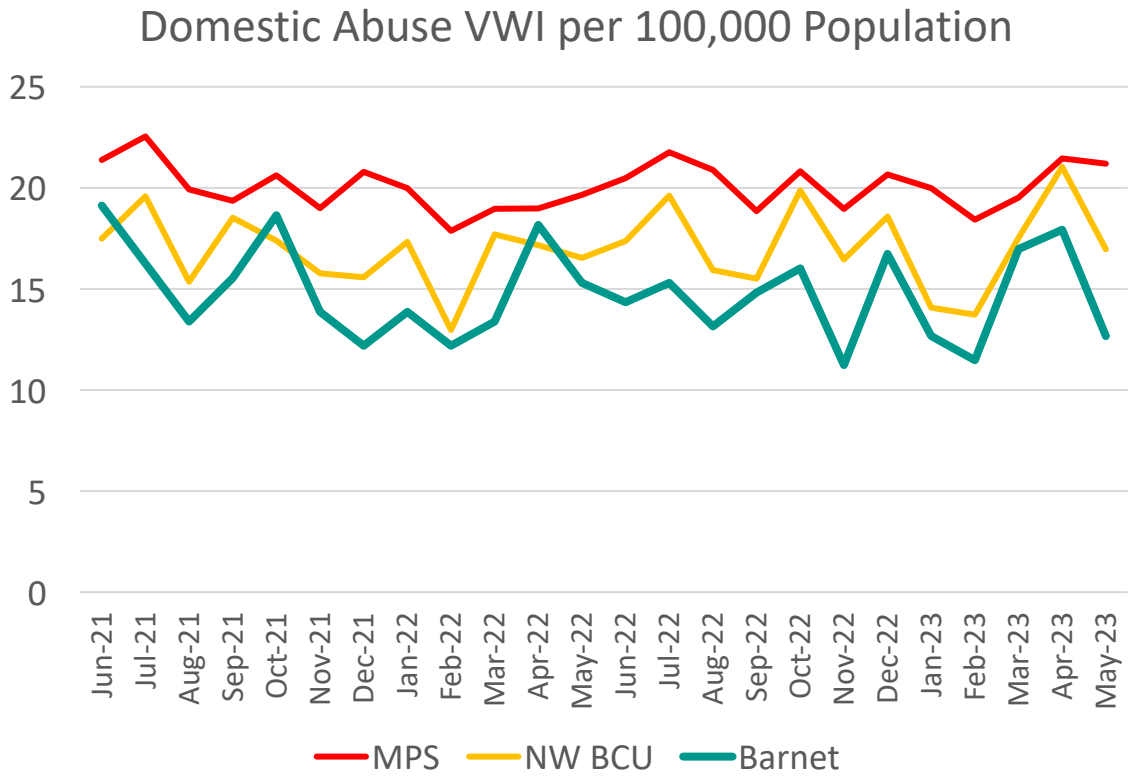


There were 3 cases of Gun Crime Lethal Barrelled Discharged in the 3 months of March 2023 to May 2023. In the same period 12 months prior there were 0. This is a decrease of 0%

Domestic Abuse Violence With Injury (VWI)

In the 3 months of March 2023 to May 2023 there were 199 cases of Domestic Abuse WI in Barnet

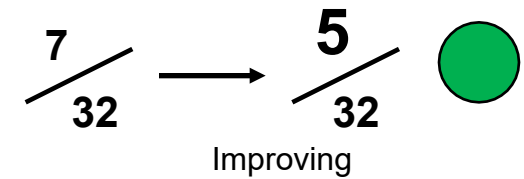
Trend



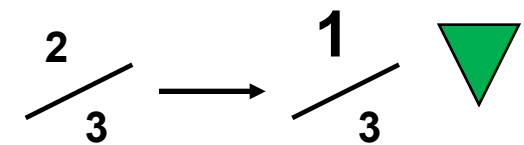
There were 725 cases of Domestic Abuse VWI in Barnet in the 12 months up to May 2023. In the 12 months prior there were 761. This is a decrease of 4.7%

3 Month Performance

MPS Comparison (3 Month Period) change from same period last year.



NW BCU Comparison (3 Month Period) change from same period last year.



There were 199 cases of Domestic Abuse VWI in the 3 months of March 2023 to May 2023. In the same period 12 months prior there were 196. This is an increase of 1.5%

Additional Crime Offences

The table below shows the number of offences recorded between March 2023-May 2023 vs March 2022–May 2022 for an additional selection of crime offences.

Offences March - May 2023 vs March - May 2022 and percentage change

Offence	Barnet March 2023 to May 2023	Barnet March 2022 to May 2022	Percentage Change (%)
Drugs	275	273	▲ 0.7%
Drugs: Possession	156	194	▼ -19.6%
Drugs: Trafficking	119	79	▲ 50.6%
Knife Crime	93	92	▲ 1.1%
Knife Injury (non DA 1-24yrs)	10	9	▲ 11.1%
Knife Crime with Injury Personal Robbery	3	7	▼ -57.1%
Knife Injury Victims (non DA Gang Flagged)	0	0	▶ 0.0%
Possession of Weapons	29	47	▼ -38.3%
Other Firearm Offences	10	1	▲ 900.0%
Possession of Other Weapons	9	23	▼ -60.9%
Possession of Article with a Blade	7	18	▼ -61.1%
Possession of Firearm Offences	2	4	▼ -50.0%
Possession of Firearms with Intent	1	1	▶ 0.0%
Violence Against the Person	2090	2031	▲ 2.9%
Violence Without Injury	1,500	1422	▲ 5.5%
Homicide	2	2	▶ 0.0%

Key:

▼ Decreased

▶ No Change

▲ Increased

Anti-Social Behaviour – Cases

Data is the 3 months of March 2023 - May 2023 (incl.)

ASB Tools and Powers Outcomes: March 2023 – May 2023

Month	Injunction	CBO	CPN Written Warning	CPN	CPN Breached	PSPO	PCO
March 2023	0	0	12	0	0	1	0
April 2023	0	0	21	0	0	3	1
May 2023	0	0	5	1	2	8	0

Key

CPN Written Warning - Community Protection Notice Written Warning – precursor to CPN
 CPN - Community Protection Notice – used to stop a person/bus./org. committing ASB which spoils the community's quality of life

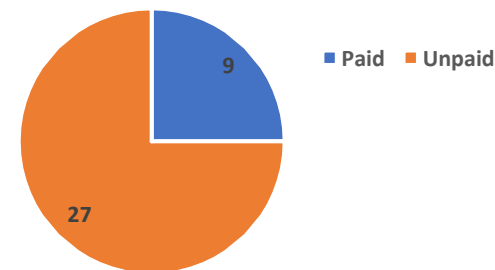
PCO - Premises Closure Order – used to protect victims and communities by closing premises that are causing nuisance or disorder

CBO - Criminal Behaviour Order – available on conviction of a criminal offence, used for the most serious and persistent offenders.

PSPO – Public Space Protection Order - enforced from December 2022

Fixed Penalty Notices: 3 Months to May 2023

FPN Data 3 Months to Mar 2023



Total Issued = 36

Community Trigger*: 3 Months to May 2023

There was **0** Community Trigger applications received during the 3 months to March 2023.

*Community Triggers give victims and communities the right to request a review of their case (where the local threshold is met), to bring agencies together to take a joined up, problem solving approach for the victim.

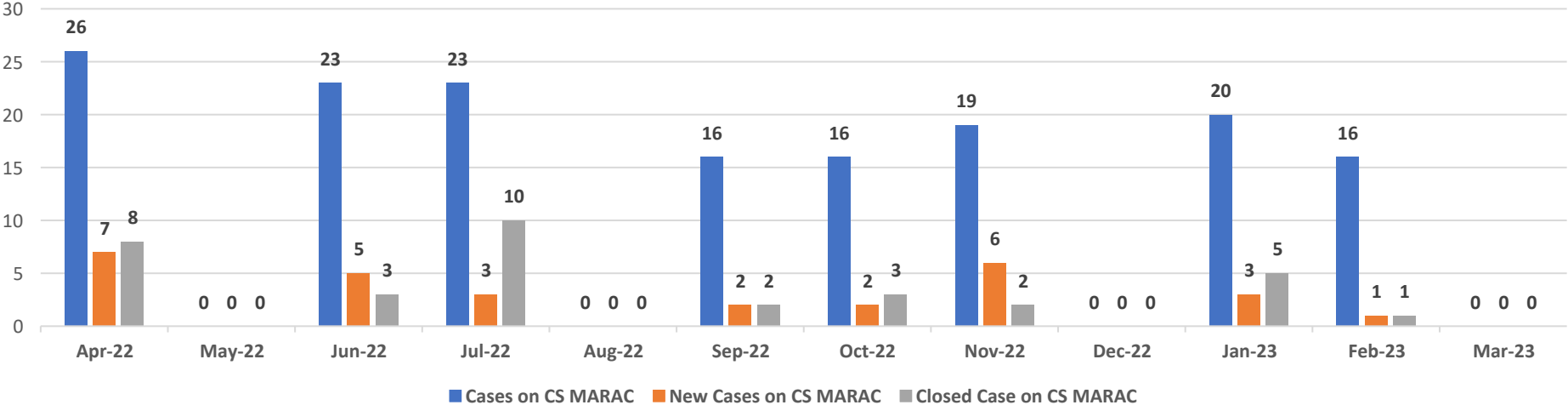
Anti-Social Behaviour - Community Safety MARAC (Multi-Agency Risk Assessment Conference) Cases



Data is from April 2022-March 2023 incl.

Community Safety MARAC Cases (April 2022 - May 2023)

CS MARAC Cases: April-March 2022/23



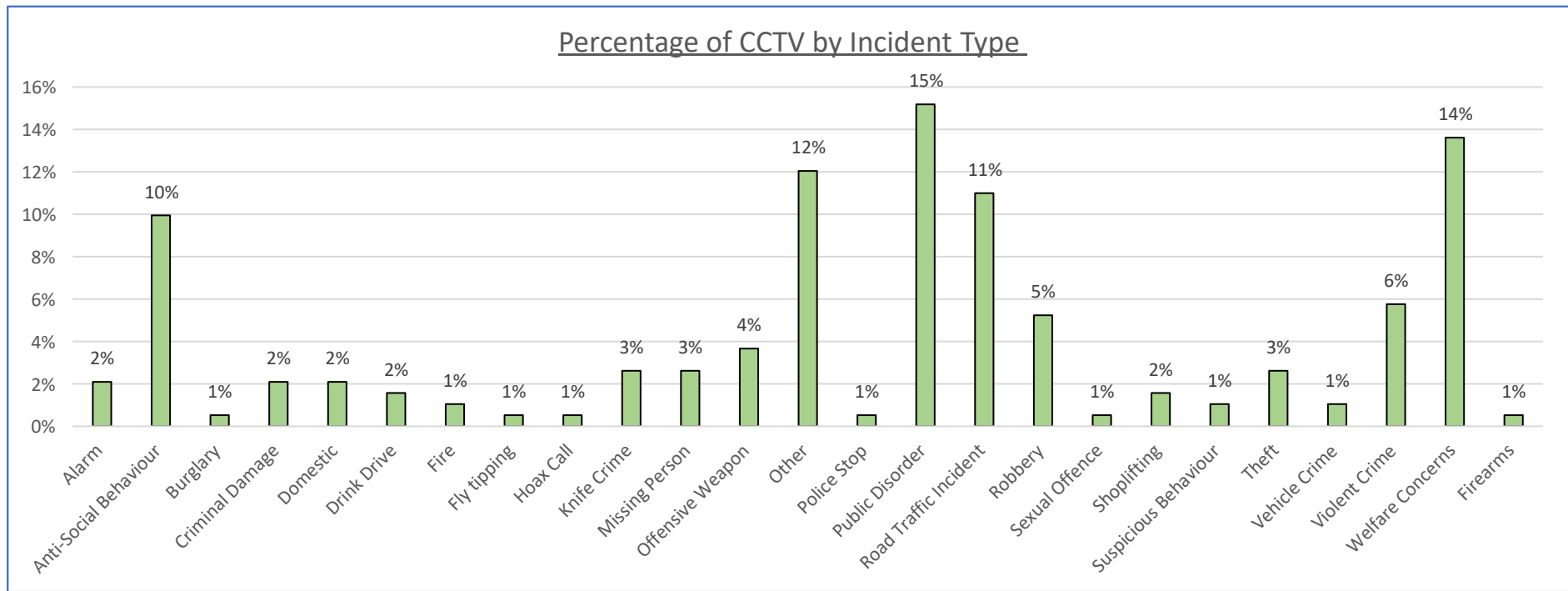
Between April 2022 - March 2023:

- Total CS MARAC cases average approx. 20 per month (ongoing cases, subject to actions from CS MARAC panel/partners)
- New CS MARAC cases average approx. 4 per month
- Closed CS MARAC cases average approx. 4 per month
- The CS MARAC is held every 6 weeks therefore there was no CS MARAC in May 2022, Aug 2022, Dec 2022 and Mar 2023

CCTV Recorded Incidents

For the 3 months of From March 2023 - May 2023 (incl.) there were 191 incidents captured by CCTV in Barnet

CCTV by Incident Type: 3 months of March 2023 to May 2023



* Other refers to incidents of vandalism and fraud

In the 3 months to May 2023:

- 15% of CCTV incidents involved Public Disorder
- 14% of CCTV incidents involved Welfare Concerns
- 12% of CCTV incidents involved Other
- 11% of CCTV incidents involved Road Traffic Incident
- 10% of CCTV incidents involved Anti-Social Behaviour
- 6% of CCTV incidents involved Violent Crime

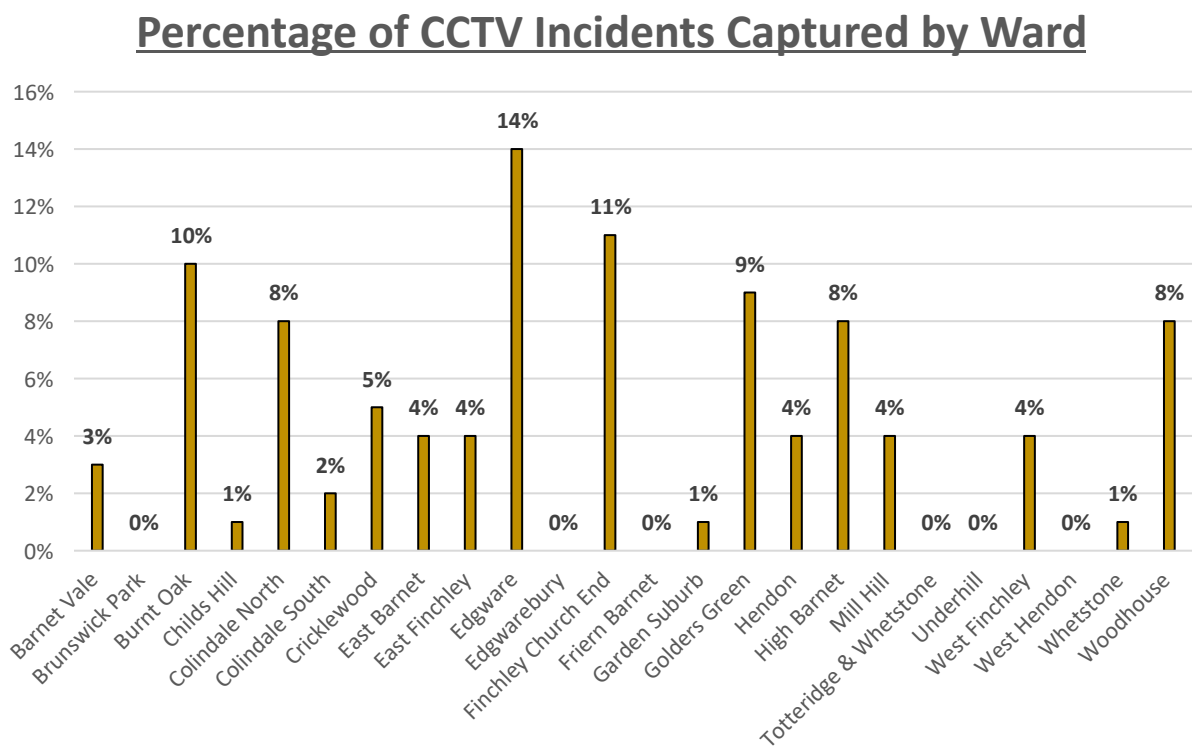
CCTV Recorded Incidents: By Ward



For the 3 months of March 2023 to May 2023 (incl.) there were 191 incidents captured by CCTV in Barnet

CCTV Incidents by Ward: 3 months of March 2023 to May 2023

Ward	Number of Incidents	% of incidents
Barnet Vale	6	3%
Brunswick Park	0	0%
Burnt Oak	20	10%
Childs Hill	2	1%
Colindale North	15	8%
Colindale South	3	2%
Cricklewood	10	5%
East Barnet	7	4%
East Finchley	8	4%
Edgware	26	14%
Edgwarebury	0	0%
Finchley Church End	21	11%
Friern Barnet	0	0%
Garden Suburb	1	1%
Golders Green	18	9%
Hendon	7	4%
High Barnet	16	8%
Mill Hill	7	4%
Totteridge & Whetstone	0	0%
Underhill	0	0%
West Finchley	8	4%
West Hendon	0	0%
Whetstone	1	1%
Woodhouse	15	8%
Grand Total	191	100%



The largest percentage of CCTV incidents were captured in Edgware (14%), Followed by Finchley Church End (11%), then Burnt Oak (10%).

CCTV Recorded Incidents by Ward

For the 3 months to May 2023 there were 191 incidents captured by CCTV in Barnet



Number of CCTV Incidents by Ward: 3 months to May 2023

LBB Ward	Alarm	Anti-Social Behaviour	Burglary	Criminal Damage	Domestic	Drink Drive	Fire	Firearms	Fly tipping	Hoax Call	Knife Crime	Missing Person	Offensive Weapon	Other	Police Stop	Public Disorder	Road Traffic Incident	Robbery	Sexual Offence	Shoplifting	Suspicious Behaviour	Theft	Vehicle Crime	Violent Crime	Welfare Concerns	Total
Barnet Vale	0	0	0	0	0	0	0	0	0	0	0	0	0	1	0	2	0	0	0	0	0	1	0	1	1	6
Brunswick Park	0	0	0	0	0	0	0	0	0	0	0	0	0	0	0	0	0	0	0	0	0	0	0	0	0	0
Burnt Oak	2	1	0	1	0	0	0	1	1	0	1	0	0	2	1	0	1	1	1	2	0	1	0	1	3	20
Childs Hill	0	0	0	0	0	0	1	0	0	0	0	0	0	0	0	0	1	0	0	0	0	0	0	0	0	2
Colindale North	1	2	0	0	0	0	0	0	0	0	1	0	3	0	0	3	1	0	0	0	0	0	0	2	2	15
Colindale South	0	0	0	1	0	0	0	0	0	0	0	0	0	0	0	1	1	0	0	0	0	0	0	0	0	3
Cricklewood	0	3	0	0	0	0	0	0	0	0	0	0	1	2	0	0	2	1	0	0	0	0	0	0	1	10
East Barnet	0	1	0	0	0	1	0	0	0	0	0	0	0	1	0	1	1	0	0	0	0	0	0	1	1	7
East Finchley	0	0	0	1	1	0	0	0	0	0	0	0	0	0	0	1	2	0	0	0	0	1	0	1	1	8
Edgware	0	2	0	0	1	0	0	0	0	0	0	1	0	4	0	6	4	3	0	0	0	1	0	0	4	26
Edgwarebury	0	0	0	0	0	0	0	0	0	0	0	0	0	0	0	0	0	0	0	0	0	0	0	0	0	0
Finchley Church End	0	2	0	1	2	1	0	0	0	0	1	0	0	2	0	0	2	3	0	0	1	0	0	2	4	21
Giarn Barnet	0	0	0	0	0	0	0	0	0	0	0	0	0	0	0	0	0	0	0	0	0	0	0	0	0	0
Garden Suburb	0	0	0	0	0	1	0	0	0	0	0	0	0	0	0	0	0	0	0	0	0	0	0	0	0	1
Golders Green	0	1	0	0	0	0	0	0	0	1	0	2	0	3	0	5	0	1	0	0	0	0	1	1	3	18
Hendon	0	0	0	0	0	0	0	0	0	0	1	2	0	0	0	1	0	0	0	1	0	1	0	0	1	7
High Barnet	1	2	0	0	0	0	0	0	0	0	0	0	2	3	0	3	3	0	0	0	0	0	0	1	1	16
Mill Hill	0	2	0	0	0	0	0	0	0	0	1	0	0	1	0	0	1	1	0	0	1	0	0	0	0	7
Totteridge & Whetstone	0	0	0	0	0	0	0	0	0	0	0	0	0	0	0	0	0	0	0	0	0	0	0	0	0	0
Underhill	0	0	0	0	0	0	0	0	0	0	0	0	0	0	0	0	0	0	0	0	0	0	0	0	0	0
West Finchley	0	1	1	0	0	0	0	0	0	0	0	0	0	2	0	1	1	0	0	0	0	0	0	0	2	8
West Hendon	0	0	0	0	0	0	0	0	0	0	0	0	0	0	0	0	0	0	0	0	0	0	0	0	0	0
Whetstone	0	0	0	0	0	0	0	0	0	0	0	0	0	0	0	0	0	0	0	0	0	0	1	0	0	1
Woodhouse	0	2	0	0	0	0	1	0	0	0	0	0	1	2	0	5	1	0	0	0	0	0	0	1	2	15
Grand Total	4	19	1	4	4	3	2	1	1	1	5	5	7	23	1	29	21	10	1	3	2	5	2	11	26	191

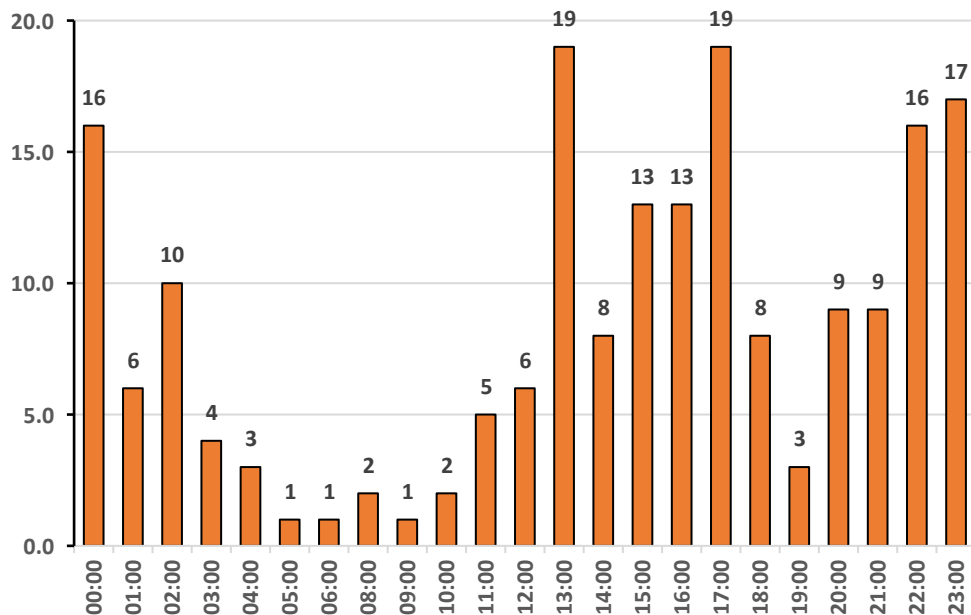
In Edgware, the largest number of CCTV incidents captured was for Public Disorder, in Finchley Church End, it was for Welfare Concerns and in Burnt Oak the largest number of CCTV incidents captured was for Welfare Concerns.

CCTV Recorded Incidents cont.

In the 3 months of March 2023 to May 2023 (incl.) there were 191 incidents captured by CCTV in Barnet

Time of Incidents: 3 months to May 2023

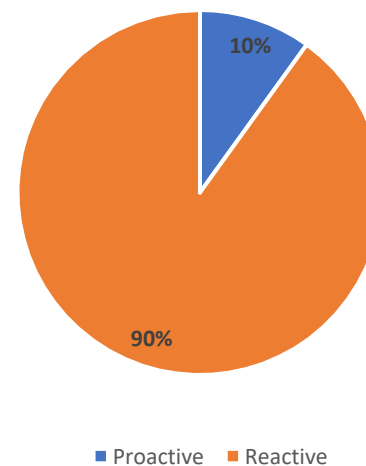
LBB CCTV Incidents Proportions by Time: 3 months to May 2023



- The above chart shows the quietest periods are between 03:00am and 11:00am.

Proactive or Reactive Incidents: 3 months to May 2023

Proportion of Proactive vs Reactive Incidents Captured on CCTV



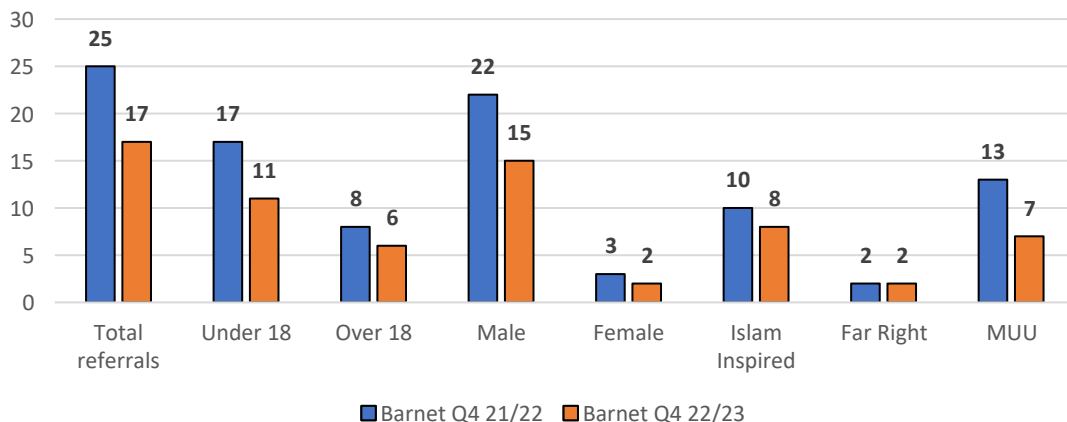
- The above pie chart shows the majority of CCTV incidents captured are reactive. (The police or the council have asked the control room for assistance).

PREVENT: Number of Referrals Barnet Qtrly Comparison

Quarter 4 (January-March) 2021/22 and 2022/23

Trend

PREVENT in Barnet: (Number of referrals) Quarter 4: January-March



There were 15 PREVENT referrals in Barnet over Qtr4. In the same quarter in the previous year, there were 25.

This is a decrease of 32%

In Barnet over the two comparable quarters of 2021/22 and 2022/23, the data shows the majority of referrals involve:

- Male (88%)
- Under 18 (65%)
- MUU inspired (41%)

Quarter 4 2022/23 compared to 2021/22 (January-March)

Prevent In Barnet	Barnet Q4 21/22	Barnet Q4 22/23	% change
Total referrals	25	17	-32.0%
Under 18	17	11	-35.3%
Over 18	8	6	-25.0%
Male	22	15	-31.8%
Female	3	2	-33.3%
Islam Inspired	10	8	-20.0%
Far Right	2	2	0.0%
MUU	13	7	-46.2%

In quarter 4 compared to same period the previous year:

- Total referrals decreased by 32.0%
- There was a 33.3% decline in female referrals (down from 3 in 2021/22 to 2 in 2022/23)
- Referrals of under 18's have decreased by 35.3%
- Islam Inspired referrals decreased by 20%
- Mixed, Unstable and Unclear (MUU) referrals decreased by 46.2%

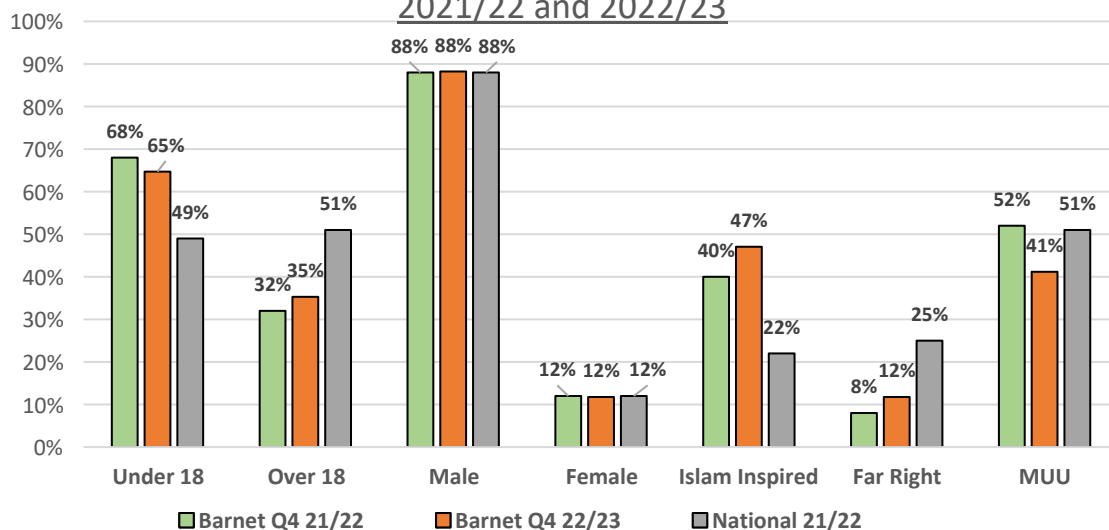
PREVENT: Percentage of Referrals - National Comparison



Quarter 4 January-March 2021/22 and 2022/23

Trend

PREVENT in Barnet: (Percentage of referrals) Quarter 4
2021/22 and 2022/23



Barnet vs National

Total Referrals Percentage Point Difference: Barnet Quarter 4 2022/23 vs National 2021/22.

Percentage point difference	Qtr4 2022/23 vs National 2021/22
Under 18	16%
Over 18	-16%
Male	0%
Female	0%
Islam Inspired	25%
Far Right	-13%
MUU	-10%

During quarter 4 in Barnet, compared to the National 2021/22 average there was:

- +16% point difference in under 18 referrals
- 0% difference in Female referrals
- +25% point difference in Islam inspired referrals
- -10% point difference in Mixed, Unstable and Unclear referrals (MUU)